

SOUTH STATION AIR RIGHTS PROJECT

TRANSIT PATRON BENEFIT SUMMARY



- Convert the value of the air rights above South Station into **significant, privately-funded transportation infrastructure improvements**;
- Facilitate and **reduce the MBTA's cost of the South Station Expansion Project**;
- **Increase bus terminal capacity by 50%**;
- **More convenient and comfortable intermodal connections**;
- Increase train station platform circulation **reducing congestion**;
- An architecturally significant public space at the train station concourse that **enhances the image of South Station as a gateway to the city**;
- A **weather-protected environment for all patrons** of South Station;
- Improvements to mitigate risk of train derailments;
- Lighting, fire and life safety and security enhancements in rail yard and platform areas;
- Provide wayfinding, access and safety enhancements for transit patrons with disabilities

SOUTH STATION AIR RIGHTS PROJECT

FUTURE TRAIN STATION PLATFORM AREA



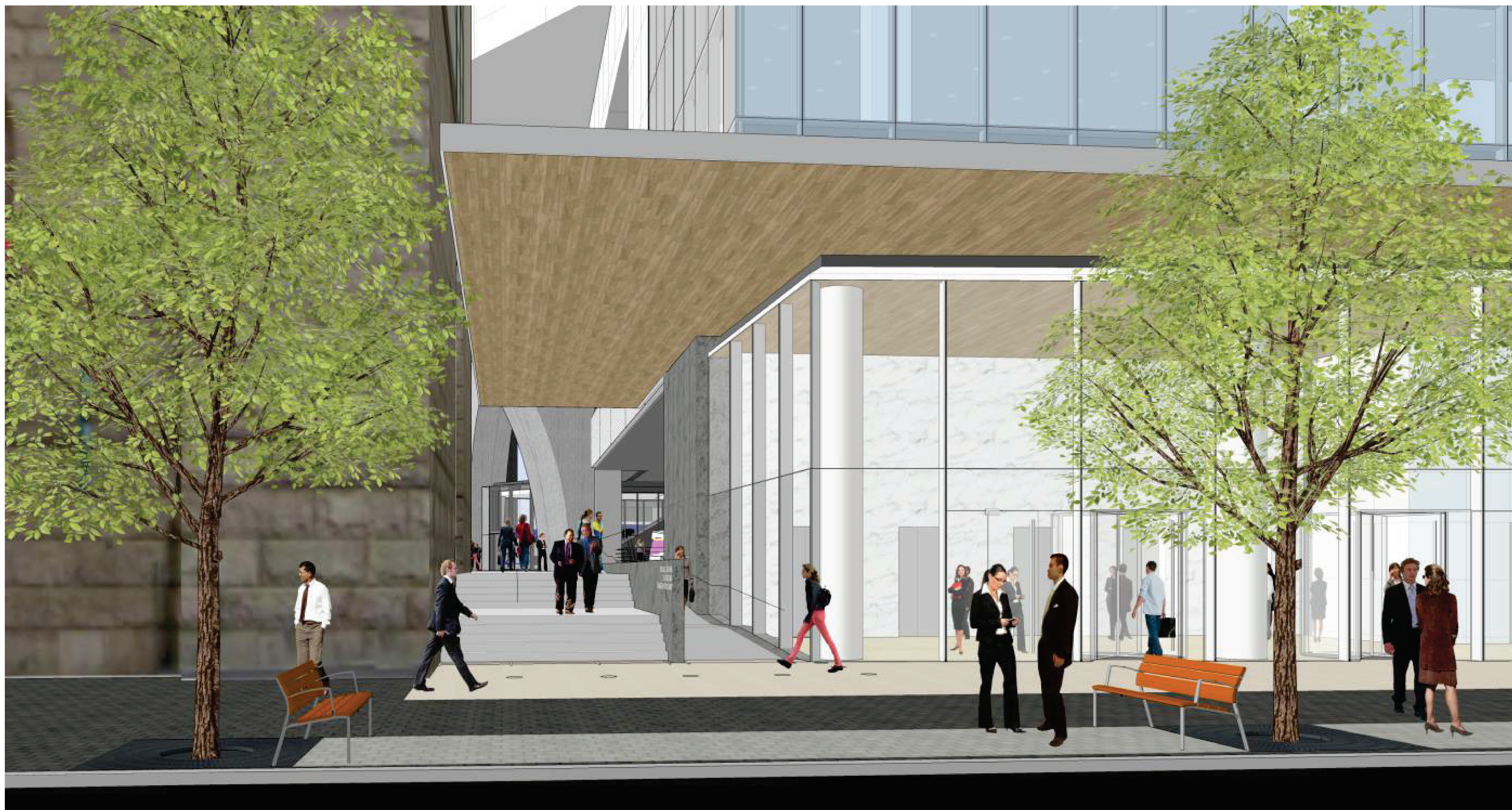
SOUTH STATION AIR RIGHTS PROJECT

NEW BUS TERMINAL CONCOURSE AREA



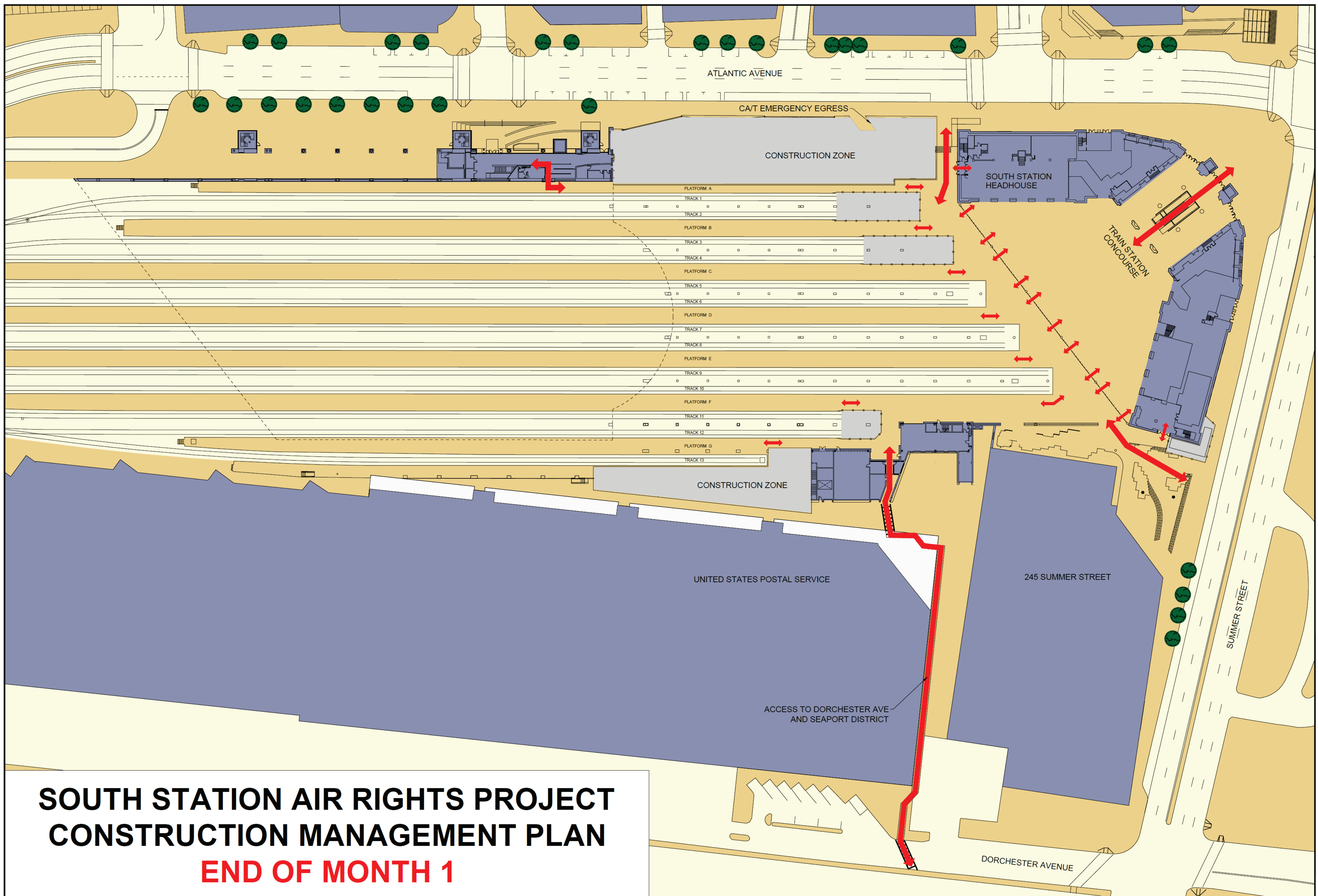
SOUTH STATION AIR RIGHTS PROJECT

FUTURE ATLANTIC AVENUE TRAIN STATION ENTRANCE



SOUTH STATION AIR RIGHTS PROJECT

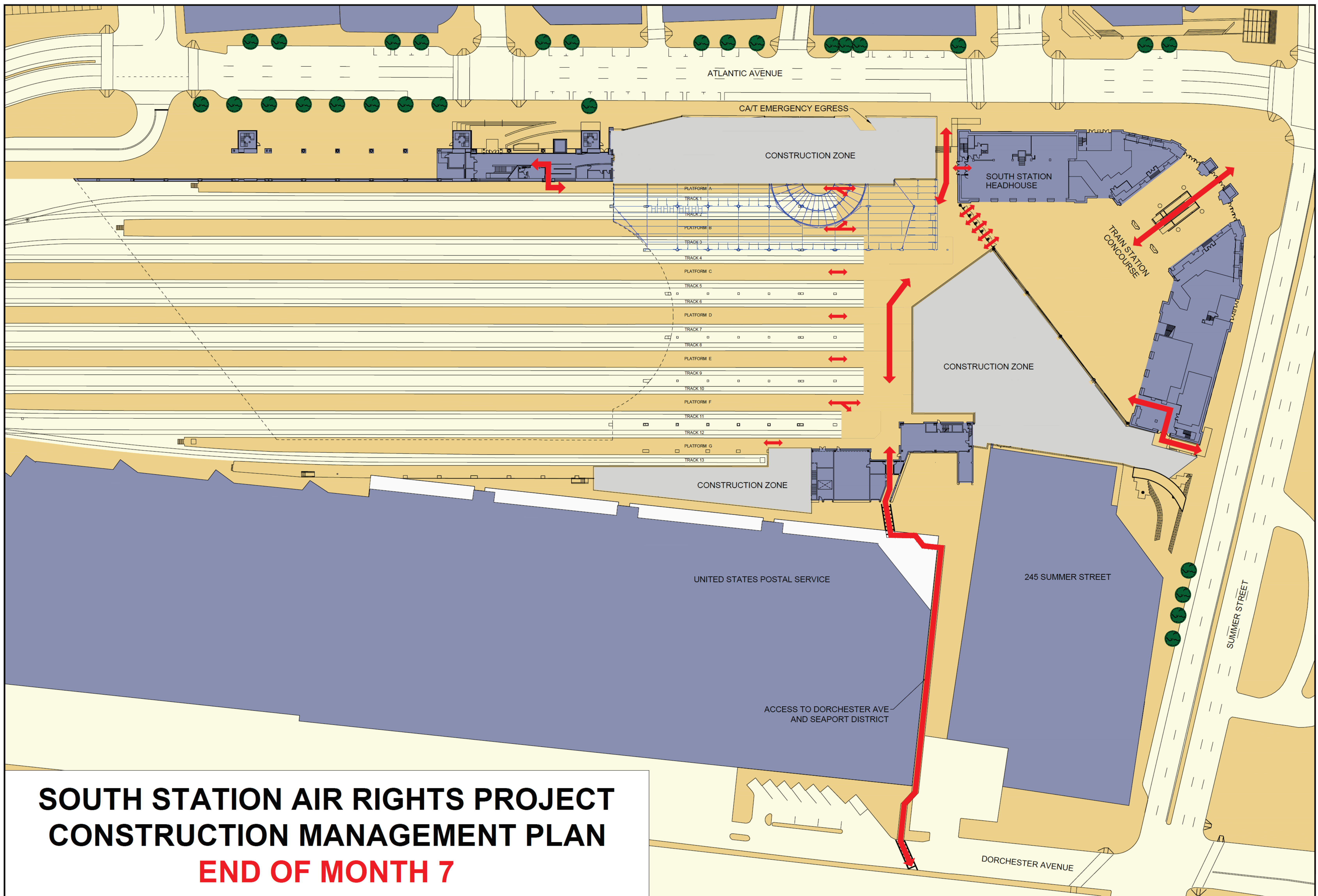
PASSENGER EXPERIENCE DURING CONSTRUCTION



**SOUTH STATION AIR RIGHTS PROJECT
CONSTRUCTION MANAGEMENT PLAN
END OF MONTH 1**

SOUTH STATION AIR RIGHTS PROJECT

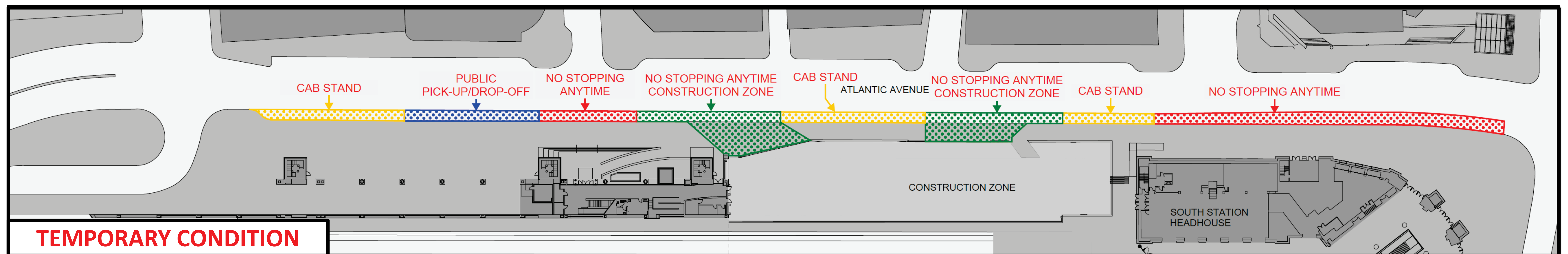
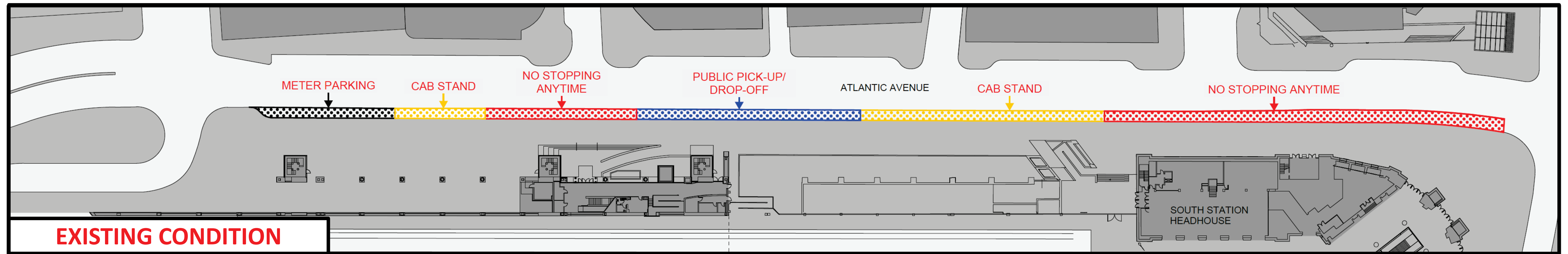
PASSENGER EXPERIENCE DURING CONSTRUCTION



**SOUTH STATION AIR RIGHTS PROJECT
CONSTRUCTION MANAGEMENT PLAN
END OF MONTH 7**

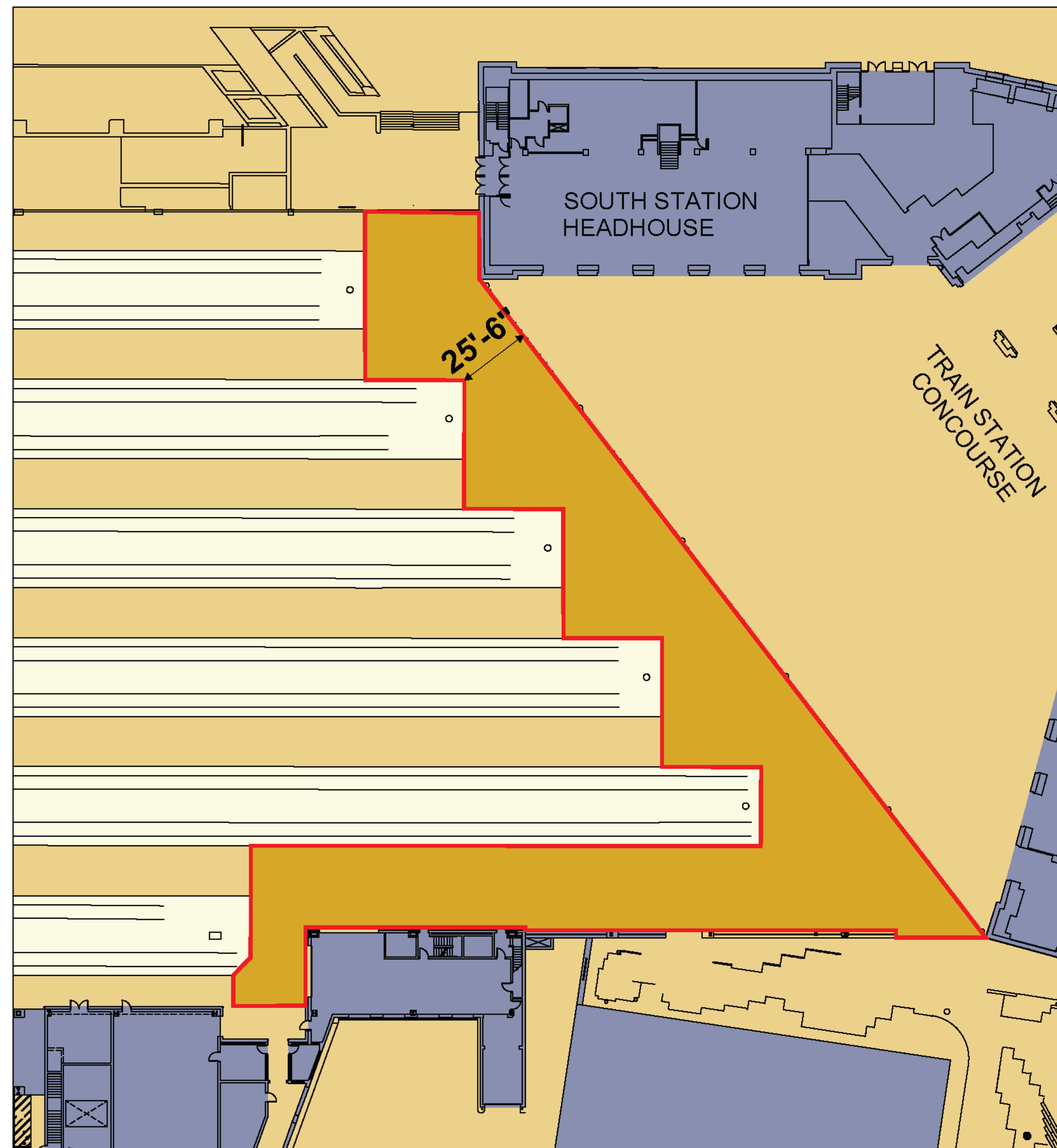
SOUTH STATION AIR RIGHTS PROJECT

ATLANTIC AVE CURB USE PLAN

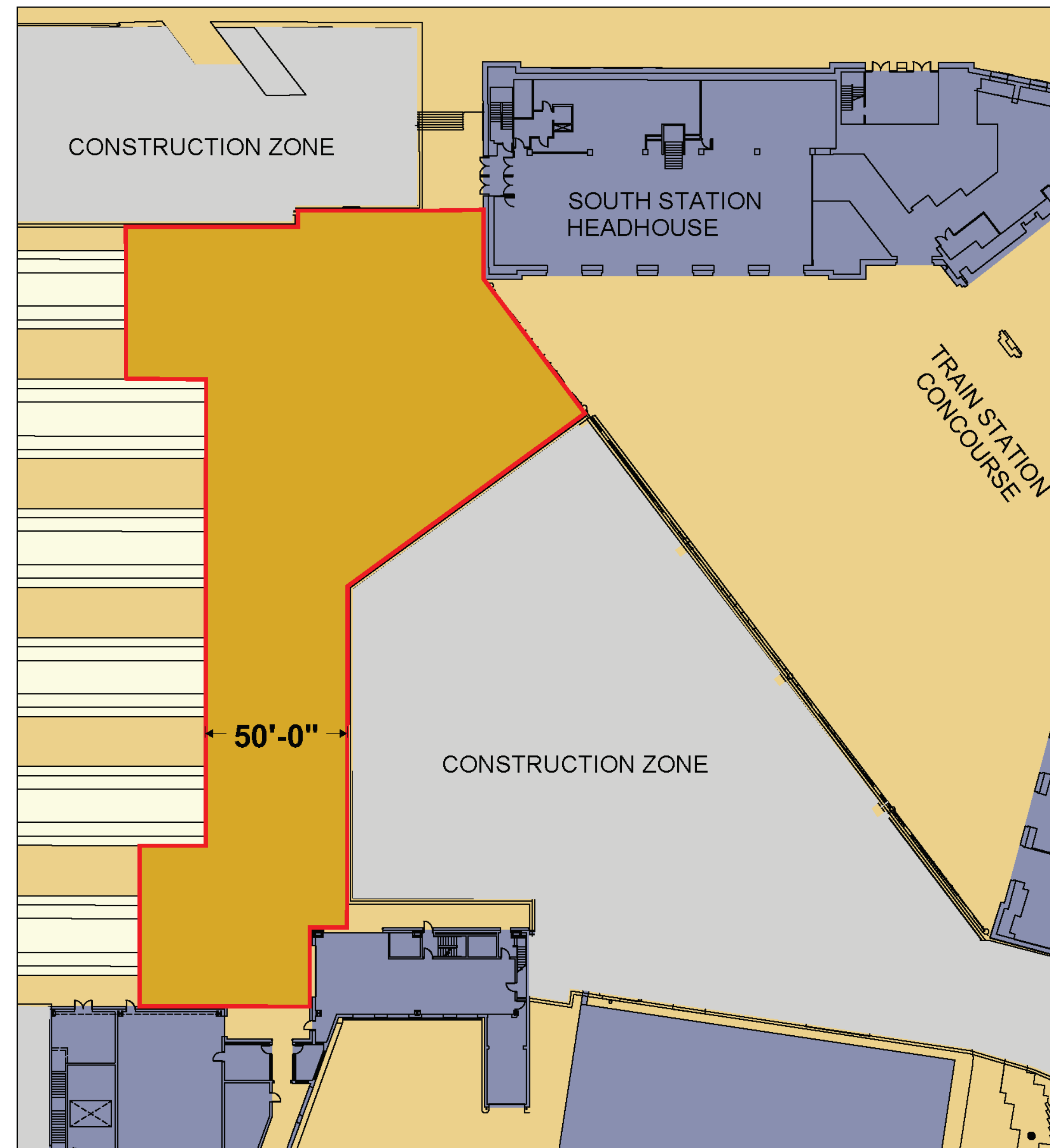


SOUTH STATION AIR RIGHTS PROJECT

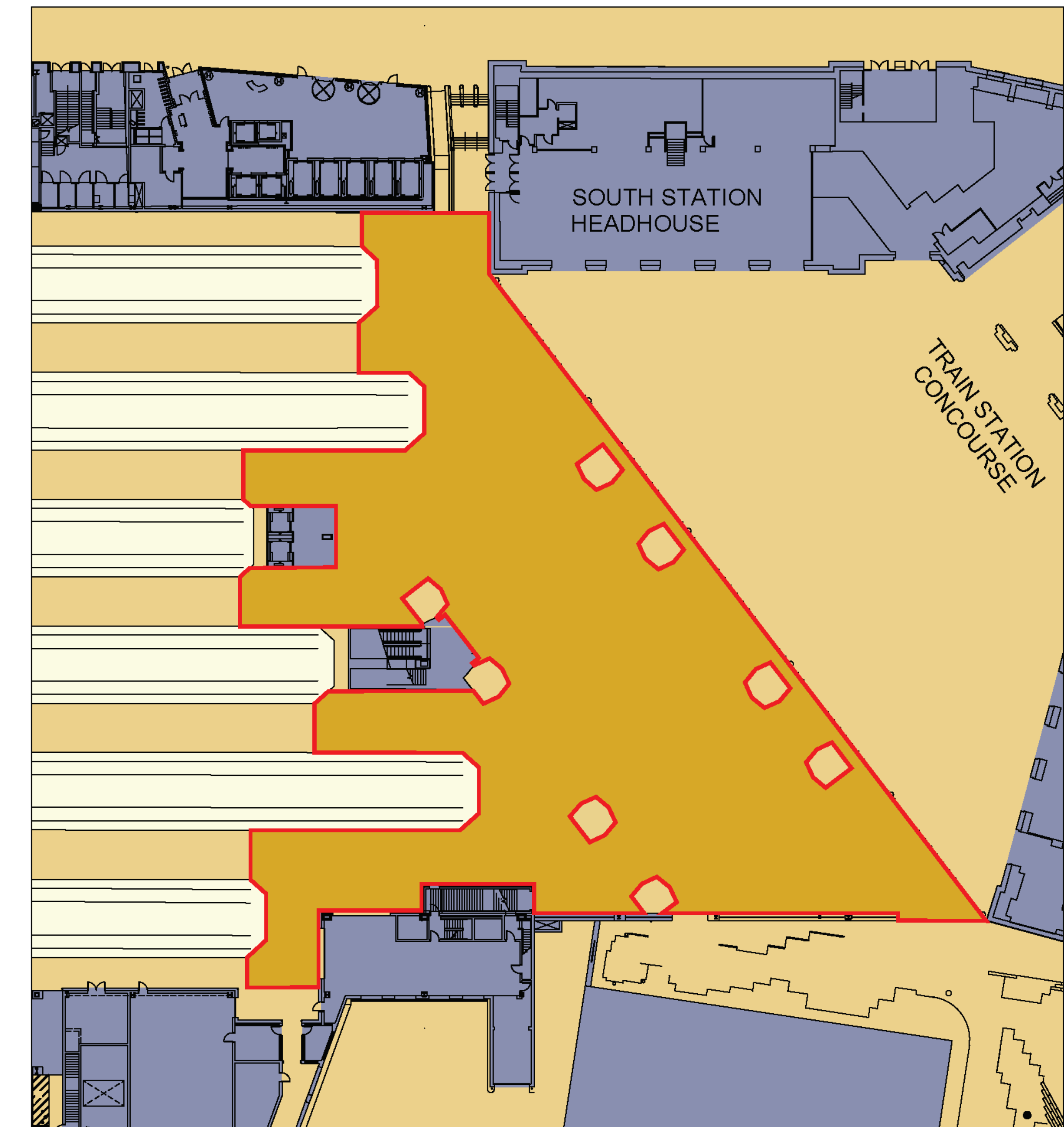
PLATFORM CIRCULATION SPACE



Existing Platform
Area: 18,440 sf



Temporary Platform
Area: 22,580 sf (+22%)



Final Platform
Area: 30,710 sf (+67%)

SOUTH STATION AIR RIGHTS PROJECT

PROJECT TIMELINE



- **January 2020:** Begin creation of construction access and staging areas on Atlantic Avenue, Summer Street and adjacent to Track 13
- **February 2020 – July 2020:** Track and platform modifications (work done at night); retail kiosk relocations; complete construction access and staging areas
- **July 2020:** New Commuter Rail and Amtrak passenger routing in place around tower construction zone
- **July 2020 – January 2021:** The structure supporting the bus terminal expansion is constructed at night
- **July 2022:** Expanded bus terminal opens
- **June 2024:** Train station improvements and access to expanded bus terminal from train station platforms complete; mixed-use tower opens

Construction schedules are subject to change due to weather and other factors

SOUTH STATION AIR RIGHTS PROJECT

TEMPORARY IMPACTS TO SOUTH STATION USERS

MBTA COMMUTER RAIL/AMTRAK CUSTOMERS

- Some entrances and exits that riders typically use to reach their trains may be closed or reconfigured due to construction zones and for their safety.
- Trains might arrive and depart on a different track than what is typical. Passengers should check their track before boarding.
- Beginning in July 2020, commuters will be encouraged to allow extra time (5-10 minutes) for travel to and from their platform until they are used to the new construction zones.
- Check the MBTA Commuter Rail Service Alerts for more information.

RED LINE AND SILVER LINE USERS

- Service on the Red Line and Silver Line should not be impacted. Check service alerts for more information.
- Beginning in July 2020, commuters making connections within the station should allow extra time as they get used to new construction zones in the station and changes in paths of travel.

SOUTH STATION BUS TERMINAL USERS

- Bus operations will not be impacted; however, users will notice construction work after year 1 as the expansion is underway.

MBTA BUS ROUTE 4, 7, AND 11 USERS

- The Summer Street at South Station stop will be relocated approximately 50 feet west, closer to the main entrance to South Station.

BICYCLISTS

- The bike shed adjacent to South Station on Atlantic Avenue will be temporarily relocated during construction. Once construction is complete, the new bike storage will be located in the new building accessible from the Atlantic Avenue sidewalk just south of the entrance to the train station.
- The Blue Bikes dock located on Atlantic Avenue will not move from its location during construction.